

# NOVA

english

[WWW.GRDIAN.COM](http://WWW.GRDIAN.COM)

USER MANUAL

# CONTENTS

## TABLE OF CONTENTS

Safety Information.....	1
Overview.....	2
What's in the Box.....	3
Recommended Accessories.....	4
Format Your Memory Card to FAT32.....	5
Modes.....	6
Modes: Video Mode.....	7
Modes: Photo Mode.....	8
Modes: Playback Mode.....	9
Mounting the Camera.....	10-11
App.....	12
App: Menu.....	13
App: Folder Menu.....	14-15
App: Video Playback.....	16
App: Video Settings.....	17
App: Photo Settings.....	18
Viewing Files on the Computer.....	19
File Naming Structure.....	20
Troubleshooting.....	21
Customer Support.....	22

# SAFETY INFORMATION

**WARNING:** Failure to follow these safety instructions could result in damage to your device and other surrounding property. Read all the safety information below before using.

## Handling

Handle your device with care. Your device can be damaged if dropped, burned, punctured, crushed, or if it comes in contact with liquid. If your device is damaged, do not continue using it, as it may cause injury. Use the correct input voltage. Do not spray cleaning products on the device. Detach the power cord from the device if the device emits an unusual smell or if there is smoke. Do not remove the microSD card while it is saving or reading data. Remove the power cord from the device if you are not planning to use the device for a long time. If the product is damaged or the power supply is cut due to an accident, video may not be recorded.

## Repairing

Do not attempt to repair the device yourself. Doing so will void the Warranty, damage your device or may cause injury. If your device is damaged or is defective, contact GRDIAN.

## Distraction

Do not operate the device while driving. Operate only when your vehicle is parked. Do not install the device where it interferes with the driver's vision.

## Exposure to Extreme Heat

NOVA and its accessories comply with applicable surface temperature standards and limits. However, even within these limits, sustained exposure to heat for long periods of time may cause damage to the device. Use common sense to avoid situations where your skin is in contact with a device or its power adapter when it's operating or plugged into a power source for long periods of time. It is important to keep NOVA and its power adapter in a well ventilated area when in use.

## Choking Hazard

Some accessories may present a choking hazard to small children. Keep these accessories away from small children.

# OVERVIEW



LED Indicator  
Blue: Indicates Camera is ON

Speaker

Camera Lens



LED Indicator  
Red: Not Recording  
Blinking Blue: Recording



Power Button

Magnetic Attachment (Attach Magnetic Mount Here)



Gesture Photography Sensor

Reset Button



Rear Camera Cable Terminal

Mic

Memory Card Slot

# WHAT'S IN THE BOX

Front Camera



Peel away 3M VHB Tape and attach to front windshield. See Page 8 for mounting instructions

Rear Camera



Peel away 3M VHB Tape and attach to rear windshield. See Page 8 for mounting instructions

Magnetic Mount (GPS Built-in)

Align and attach the magnetic mount to the magnetic attachment found on the front camera



Insert Micro USB Power Cable here to power on the NOVA

Micro USB Power Cable  
Plug into Cigarette USB  
Charger or plug into USB  
terminal.



Rear Camera Cable  
Plug into Rear Camera  
and into Front Camera



# RECOMMENDED ACCESSORIES

## OPTIONAL ACCESSORIES

Everything you need to get started is included with the NOVA except a memory card and a hardwire kit. To enhance your dash camera experience, we recommend purchasing additional items to take advantage of additional features.



### **Charger Plus Hardwire Kit**

The Charger Plus Hardwire Kit enables the Parking Mode feature found on your dash cam. The hardwire kit regulates the flow of power and protects your battery from drainage. It features a built-in timer and voltage protection setting. Available for purchase at [www.grdian.com](http://www.grdian.com) and Amazon.



### **Memory Card**

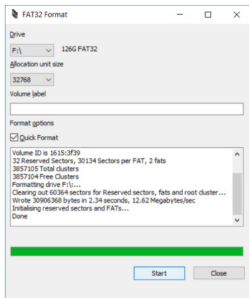
The NOVA is capable of using up to 128gb of memory. We recommended using the SanDisk Max Endurance series for better overall performance. NOTE: Recommended memory card is subject to change following newer releases or better models.

# FORMAT YOUR MEMORY CARD TO FAT32

## FAT32 (64GB OR HIGHER)

To ensure your device operates as intended, please take the time to format your memory card on a computer to FAT32. (This only applies if your memory card is 64gb or more).

Download FAT32Format at [grdian.com/resources/how-to-format-exfat-to-fat32](http://grdian.com/resources/how-to-format-exfat-to-fat32)



# MODES

## CYCLING THROUGH THE DIFFERENT MODES

The NOVA is capable of video recording, capturing photos and playing back recorded video and photo content. To cycle through the different modes, hold the MENU Button down until the mode is changed.



### VIDEO MODE

Default Mode. Video mode allows you to record videos. Visit Page 5 for more information.

### PHOTO MODE

Photo Mode lets you take pictures. Visit Page 6 for more information. (NOTE: You can also utilize the Gesture Photography Feature when in Video Mode by enabling the feature in the Settings Menu and by waving your hand under the Gesture Photography Sensor.

### PLAYBACK MODE

Playback Mode displays your recorded video and photo content. Visit Page 7 for more information.



# MODES: VIDEO MODE

## VIDEO MODE OVERVIEW

Video mode is the default mode the NOVA will be in when turned ON. Video Mode allows for video recording. NOTE: Gesture Photography is available in Video Mode. Simply wave under the camera to snap a photo.



**POWER Button**  
-Pause/Resume  
-Enter

**UP Button**  
-Enable Wifi

**MENU Button**  
-Settings Menu

**DOWN Button**  
-Mic ON/OFF

**POWER Button**  
ON/OFF - Hold down button.

**PAUSE/RESUME RECORDING** - Press to pause, press again to resume recording.

**ENTER** - When accessing the Menu, press to confirm selection.

**UP Button**  
ENABLE WIFI - Press to enable Wifi.

**UP** - When in the Menu, press to scroll up.

**MENU Button**  
ACCESS VIDEO MODE SETTINGS MENU - Press once to access Settings Menu. (Can only be accessed when recording is paused)

**Down Button**  
MIC ON/OFF SHORTCUT - Press and hold to quickly turn ON/OFF audio recording.

**DOWN** - When in the Menu, press to scroll down.

# MODES: PHOTO MODE

## PHOTO MODE OVERVIEW

Photo mode allows you to easily snap photos on-the-go.



**POWER Button**  
-Take a Picture  
-Enter

**UP Button**  
-Enable Wifi  
-Zoom In  
**MENU Button**  
-Settings Menu

**DOWN Button**  
-Zoom Out

### POWER Button

ON/OFF - Hold down button.

ENTER - When accessing the Menu, press to confirm selection.

### TAKE A PICTURE

- Press to take a photo.

### UP Button

ENABLE WIFI - Press to enable Wifi.

ZOOM-IN - Hold down button to zoom.

### MENU Button

ACCESS PHOTO MODE SETTINGS MENU - Press once to access Settings Menu.

### DOWN Button

ZOOM OUT - Hold down button to zoom in.

# MODES: PLAYBACK MODE

## PLAYBACK MODE OVERVIEW

The 4 buttons on the NOVA are designed to have different functions depending on the mode you are in.



### POWER Button

ON/OFF - Hold down button.

ENTER - When accessing the Menu, press to confirm selection.

PLAY VIDEO - Press to play the current video displayed.

### UP Button

SCROLL FORWARD - Press to scroll through files recorded on your memory card.

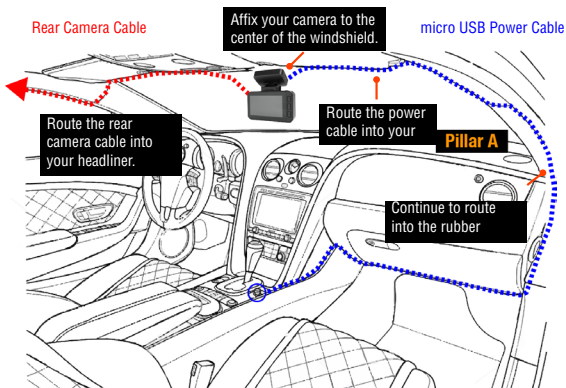
### MENU Button

ACCESS PLAYBACK-MODE SETTINGS MENU- Press once to access Menu Settings.

# MOUNTING THE CAMERA

## MOUNTING THE FRONT CAMERA

1. Peel away the 3M tape and place the mount at the center of your windshield.
2. Locate a power source. This can either be a USB terminal or a cigarette outlet.
3. Plug the micro USB power cable into the mount.
4. Route the micro USB power cable inside your headliner.
5. Continue through the headliner of your vehicle and down the A Pillar. Tuck your wire in the rubber weather guard to conceal wiring.
6. Continue down in the direction of your power source. Tuck in additional wiring into the nooks and crannies of your vehicle.
7. Plug the micro USB power cable into your power source with the provided car charger or directly into a USB terminal.

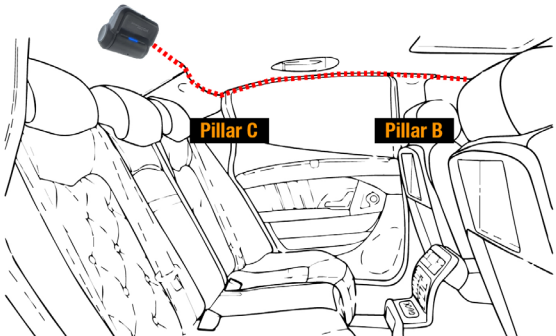


# MOUNTING THE CAMERA

## MOUNTING THE REAR CAMERA

1. Peel away the 3M tape and place the rear camera at the center of your rear windshield.
2. Connect the rear camera cable into main unit's mount. Route the cable into the front headliner through the A Pillar, B Pillar, C Pillar and then to the rear headliner.
3. Plug the rear camera cable into the rear camera. Excess wires can usually be tucked into the rear headliner.

Rear Camera Cable



# APP

## INSTALLING AND CONNECTING TO THE APP

1. Plug the camera into a power source to turn ON.
2. Download the LUCKYCAM app.
3. Locate SSID: NV-XXXXXXXXXX in your Wifi settings.
4. Enter the password: 12345678
5. Open the LuckyCam app. You should automatically be connected.



APP → LUCKYCAM  
SSID → NV-XXXXXX  
PW → 12345678



### WARNING

Do not attempt to operate when vehicle is in motion. Only operate when your vehicle is parked



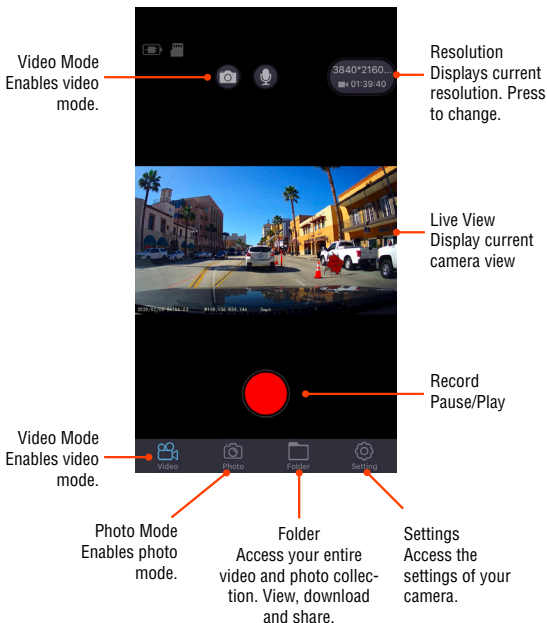
### NOTE

Some settings option may not be available via App. Access the dash cam's settings for access to full setting options.

# APP: MAIN MENU

## MAIN MENU

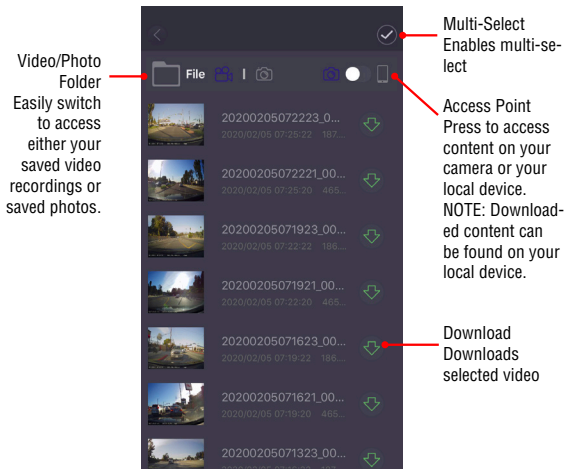
When connected, the Main Menu is where you can find everything from changing the settings, viewing recorded content, snapshots and more.



# APP: FOLDER MENU

## FOLDER MENU

The Folder Menu is where you will find all of your downloaded content and downloaded content. View, edit, download and share your files in this menu.

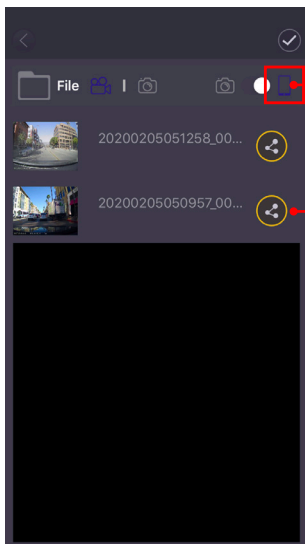




# APP: MAIN MENU

## VIEWING YOUR DOWNLOADED CONTENT

Downloaded content are located on your local device. You can access downloaded content by switching access to your local device.



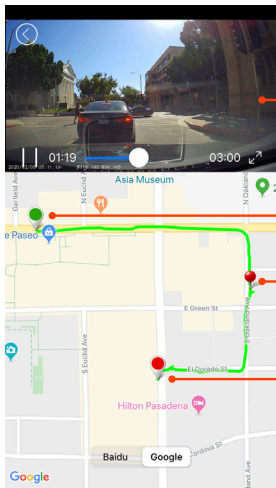
**Access Point**  
Switch access to your local device to view downloaded content.

**Share**  
Press to share your video or photos.

# APP: FOLDER MENU

## VIDEO PLAYBACK

To playback a video, choose one from the video library. In the playback menu, download, take a snapshot, and view your route history in relation to the video playing (feature available only with the GPS antenna).



**Video**  
Take a snapshot of the current frame.

**Start**  
Download the video to your device.

**Current Location**  
View your exact location here. (Only available with the GPS Antenna)

**End**  
View your current position (Only available with the GPS Antenna)

# APP: VIDEO SETTINGS

## VIDEO SETTINGS

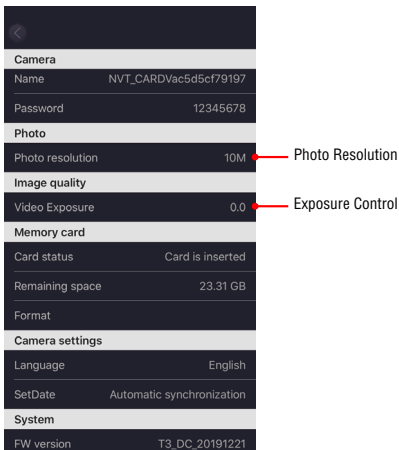
Access your Video Settings by remaining in the Video Menu and pressing on the Settings Button. Here, you will be able to change various settings of your camera to how you see fit.

<b>Camera</b>		
Name	NVT_CARDVac5d5cf79197	SSID
Password	12345678	SSID Password
<b>Video</b>		
Loop recording	3 min	Loop Recording Length: Length time of each segment.
G-Sensor	Mid	G-Sensor Sensitivity: Off is recommended. Does not overwrite.
Record Size	3840*2160 P30	Video Resolution
Motion Detect	<input type="checkbox"/>	Enables Parking Mode: Only the front camera has a built-in motion detector.
Microphone Sound	<input type="checkbox"/>	Mic: Turns ON/OFF audio recording
Show date and time	<input type="checkbox"/>	Date & Time
WDR	<input type="checkbox"/>	Wide Dynamic Range
<b>Image quality</b>		
Video Exposure	0.0	Exposure Control
<b>Memory card</b>		
Card status	Card is inserted	Status of Memory Card
<b>Memory card</b>		
Card status	Card is inserted	
Remaining space	23.31 GB	Remaining Memory
Format		
<b>Camera settings</b>		
Language	English	Language Setting
SetDate	Automatic synchronization	Automatic sync when connected to phone

# APP: PHOTO SETTINGS

## PHOTO SETTINGS

Access your Photo Settings by pressing on the Photo Menu and pressing on the Settings Button. Here, you will be able to change various settings of your camera to how you see fit.



<b>Camera</b>		
Name	NVT_CARDVac5d5cf79197	
Password	12345678	
<b>Photo</b>		
Photo resolution	10M	Photo Resolution
<b>Image quality</b>		
Video Exposure	0.0	Exposure Control
<b>Memory card</b>		
Card status	Card is inserted	
Remaining space	23.31 GB	
<b>Format</b>		
<b>Camera settings</b>		
Language	English	
SetDate	Automatic synchronization	
<b>System</b>		
FW version	T3_DC_20191221	

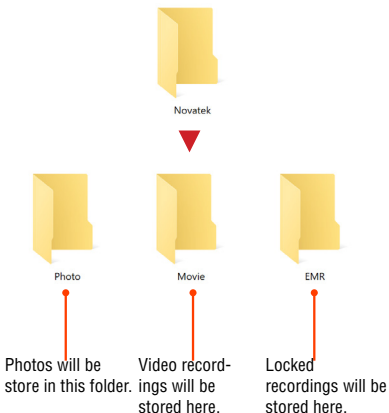
# VIEWING FILES ON THE COMPUTER

## FILE STRUCTURE

### READING, DOWNLOADING AND TRANSFERRING

The fastest way to read, download, and transfer files en masse is to insert your memory card into the computer.

When you view your files on your computer you will see the following:



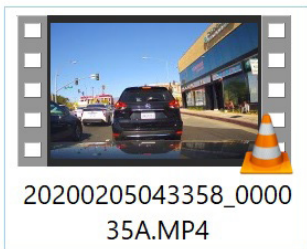
**NOTE:** Do not edit or delete files within the memory card. Doing so may mess up the sequence of files.

# FILE NAMING STRUCTURE

## UNDERSTANDING THE FILE SEQUENCE

### FILE NAME

Your files are named sequentially according to its recording time, day and type. Below is an explanation of the file name structure.



2020 02 05 04 33 58 000035 A

Year

Month

Day

Hour

Min

Sec

File #

Indicates Front (A) or  
Rear (B) Camera

# TROUBLESHOOT

## FREQUENTLY ASKED QUESTIONS

### **The videos are blurry on playback. Why is my videos blurry?**

Please make sure to remove and clean any debris found on the camera's lens. If the issue persists, contact our support team to have your camera lens refocused or replaced.

### **The NOVA is not loop recording**

Please use the SanDisk Max Endurance memory card. In addition, format your memory card to FAT32 if your memory card is 64gb or more.

### **Is the NOVA suppose to get this hot?**

It is normal for the NOVA to get hot when left in direct sunlight. This will not affect its performance.

### **Do I need a hardwire kit to use the Parking Mode Feature?**

Yes, it is generally recommended to use a hardwire kit to use the Parking Mode Feature. A hardwire kit protects your vehicle from battery drainage. A hardwire kit also lets you run your camera even when your vehicle is turned off.

### **How do I remove the magnetic mount?**

The magnetic mount uses 3M VHB tape. The VHB tape is a very strong adhesive. We highly recommended purchasing a Clear Film Window Tint Protector. The Clear Film Window Tint Protector is a removable clear film that makes it easy to peel away your mount without leaving any residue.

### **How do I view my videos?**

The fastest and easiest way to view all of your recorded content is to view it on the computer. Easily plug in your microSD into a compatible source and view all the files on the computer.

### **What media player do you recommend?**

We recommend using the VLC media player. VLC is free to download at <https://www.videolan.org/>

# CUSTOMER SUPPORT

## SUPPORT

### SUPPORT

GRDIAN is dedicated to providing the best possible services and products. To reach out to our support team, please visit: [grdian.com/contact-us](http://grdian.com/contact-us)

### MESSAGING US

We make ourselves available to you on different social media platforms. You can reach out to us on Twitter, Facebook, and Instagram.

## CONNECT WITH US

Facebook

[facebook.com/teamgrdian](https://facebook.com/teamgrdian)

Instagram

[@teamgrdian](https://instagram.com/teamgrdian)

Twitter

[@teamgrdian](https://twitter.com/teamgrdian)







Connect With Us

Facebook [facebook.com/teamgrdian](https://facebook.com/teamgrdian)

Instagram [@teamgrdian](https://instagram.com/teamgrdian)

Twitter [@teamgrdian](https://twitter.com/teamgrdian)

[WWW.GRDIAN.COM](http://WWW.GRDIAN.COM)